

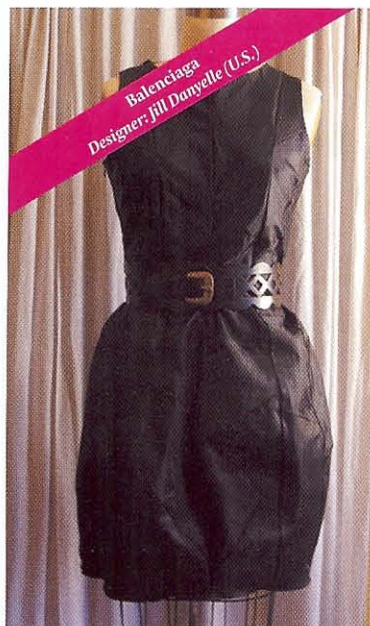


new +
notable
2006

The Year's Sharpest Products



Fashion Competition



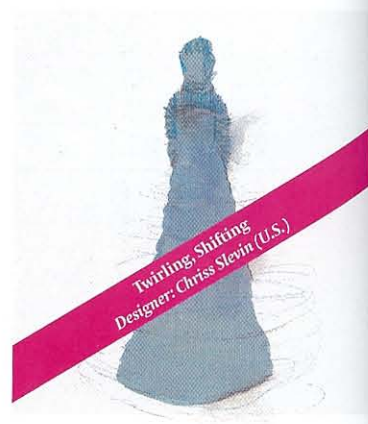
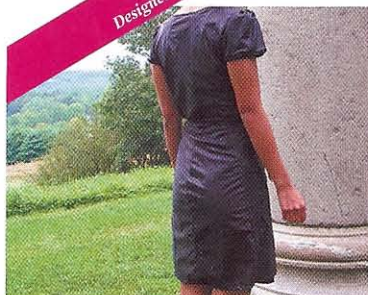
Balenciaga
Designer: Jill Danyelle (U.S.)



Adjustable Jacket/Dress
Designer: Sam McLaughlin (U.K.)



The Dusty
Designer: Carolin Kim (U.S.)



Twirling, Shifting
Designer: Chriss Slevin (U.S.)



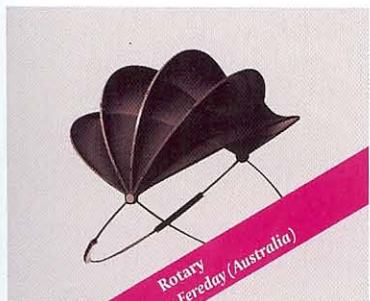
Cristóbal Balenciaga's 1950s bubble silhouette is evoked in a little black dress made of fabric snipped from the frames of discarded umbrellas and cinched with a vintage belt.

After advertising for worn-out umbrellas, McLaughlin happened upon a businessman's model that had been abandoned in a train station in Brighton, England, where he lives. He constructed a woman's zippered jacket/dress from the sun-bleached black fabric and carved toggles from the handle.

Four discarded umbrellas went into making The Dusty, a wrap dress that can be tucked into a purse for travel. Named for the late singer Dusty Springfield (a model of "sophistication and class despite a sad day or a little rain," according to Kim), the dress is intended for outdoor occasions, such as weddings or funerals.

Chriss Slevin's childhood on the tornado-swept Great Plains inspired this funnel-shaped gown, with skirt and bodice made from reclaimed umbrella fabric and shoulders and hood knitted from two biodegradable yarns, Ingeo and Tencel.

Design Competition



Rotary
Designer: Tom Fereday (Australia)



Penta
Designer: Alberto Ochoa (Spain), with Ana Diaz-Llamas



Ramesh
Designer: Davod Qasimi (Iran)



Pollinate
Designers: Mike Loveless and Matt McManagham (Canada)



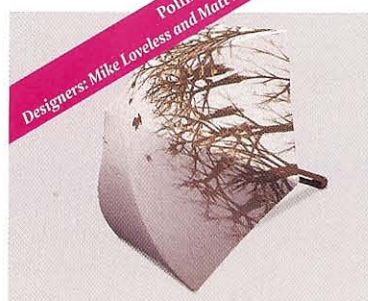
Rotary stands out by virtue of its unorthodox form, which eliminates sharp, fragile spokes. With handles positioned to guide the user's grip, the Rotary, according to its designer, can be held more steadily and with less effort than traditional umbrellas.



Named for a canopy shape that keeps water from splashing down the user's back, Penta is distinguished by a funnel at its crown that collects rainwater. A hook on the handle is for hanging extra parcels.



Tug a cord threaded through the shaft, and tensile forces hold Ramesh's components together. Cut the cord at the end of the umbrella's life, and it disassembles into recyclable parts made of aluminum, polyethylene HD, and recycled polyester.



This 100 percent biodegradable umbrella has a structure of bamboo and recycled wood and fabric of beeswax-coated hemp tinted with plant-based dyes.